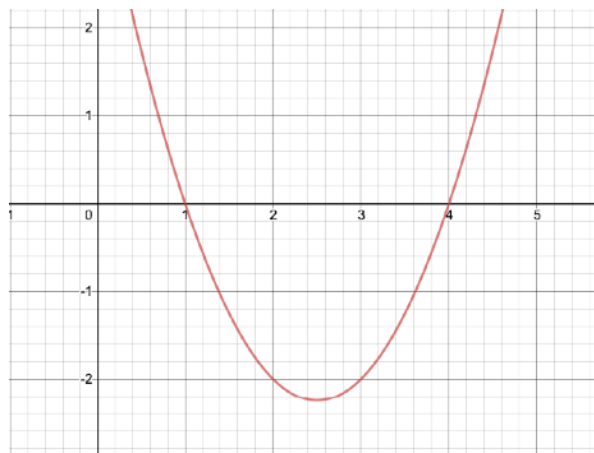
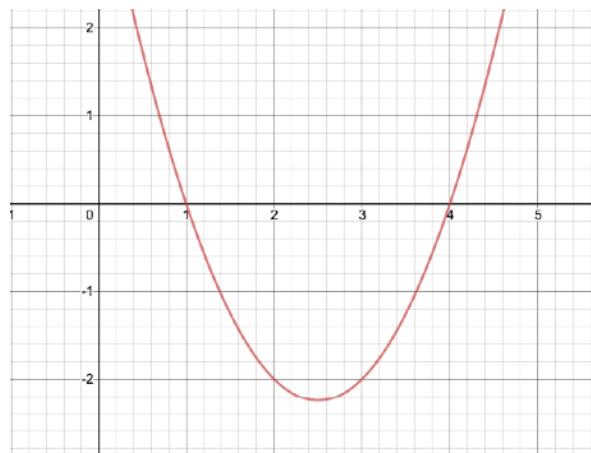


1 For each graph shade the region indicated by the inequality.

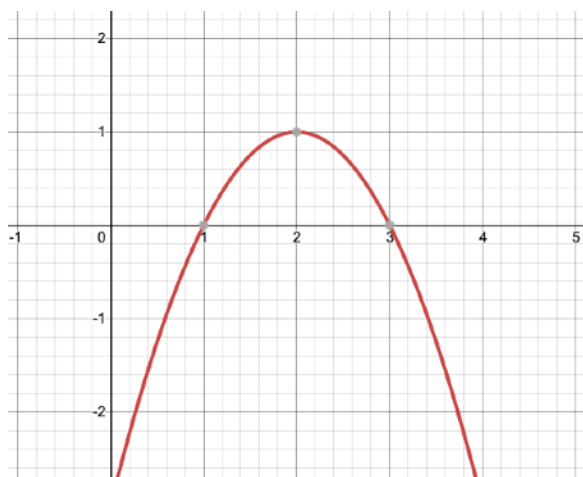
(a) $x^2 - 4x + 5 < 0$



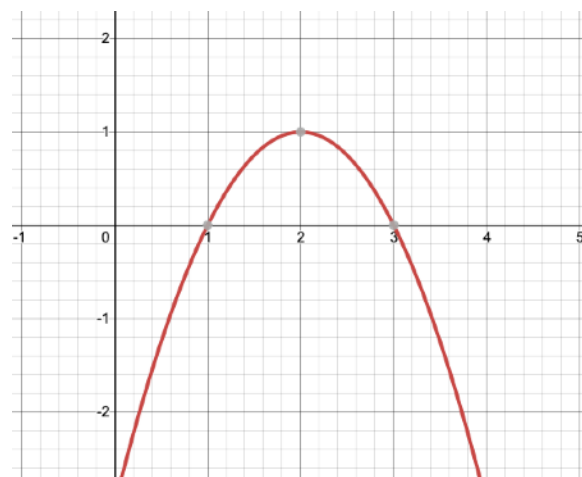
(b) $x^2 - 4x + 5 \geq 0$



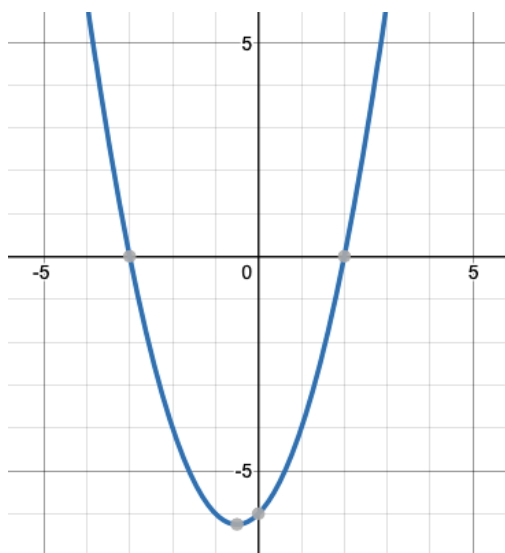
(c) $-x^2 + 4x - 3 \leq 0$



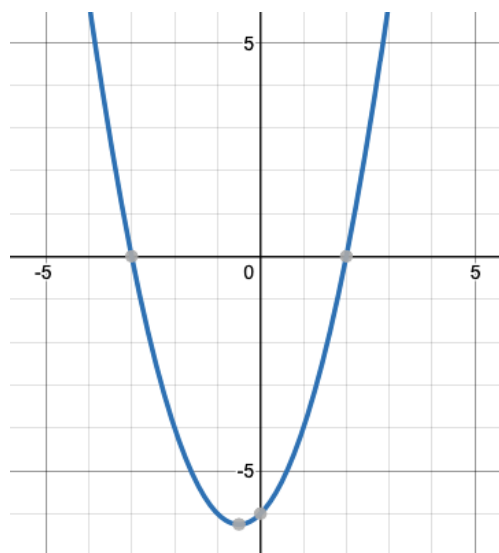
(d) $-x^2 + 4x - 3 > 0$



(e) $x^2 + x - 6 \leq 0$

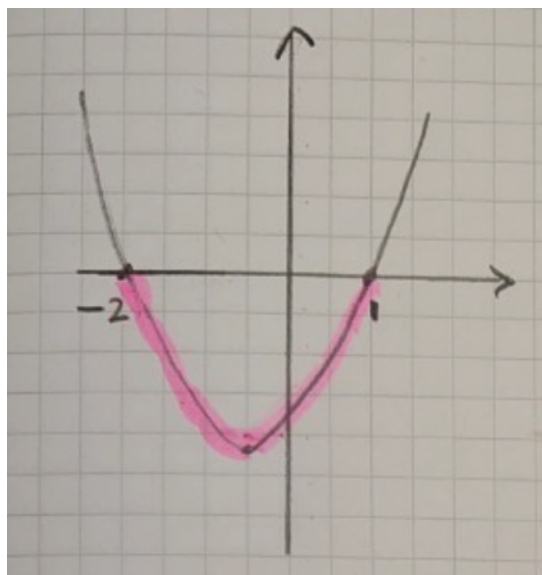


(f) $x^2 + x - 6 > 0$

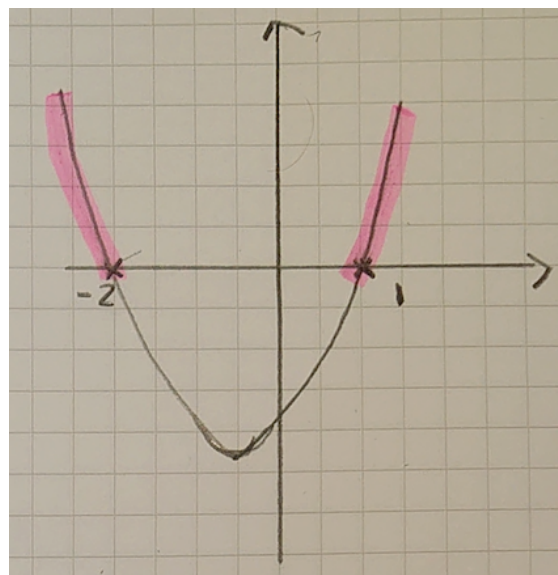


2 Write an inequality to describe the shaded regions in each of the following:

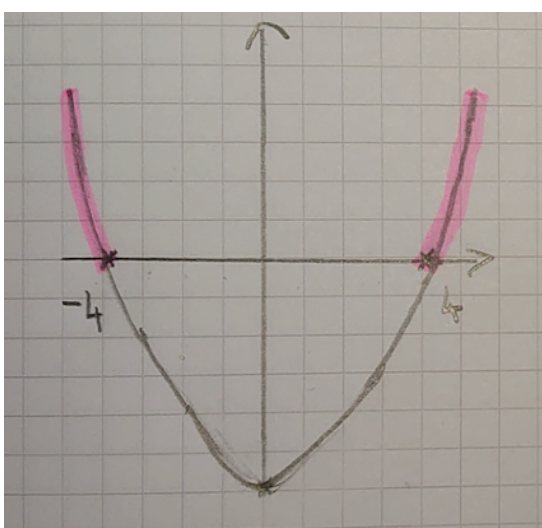
(a)



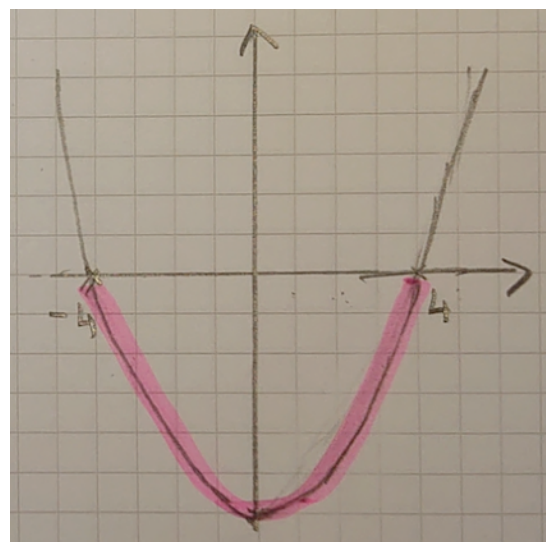
(b)



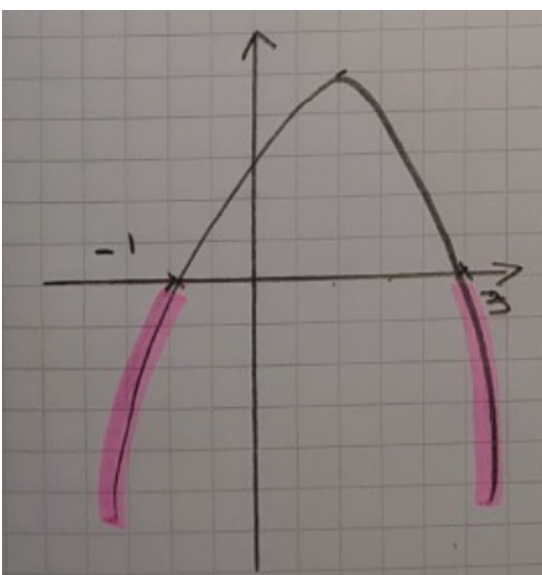
(c)



(d)



(e)



(f)

